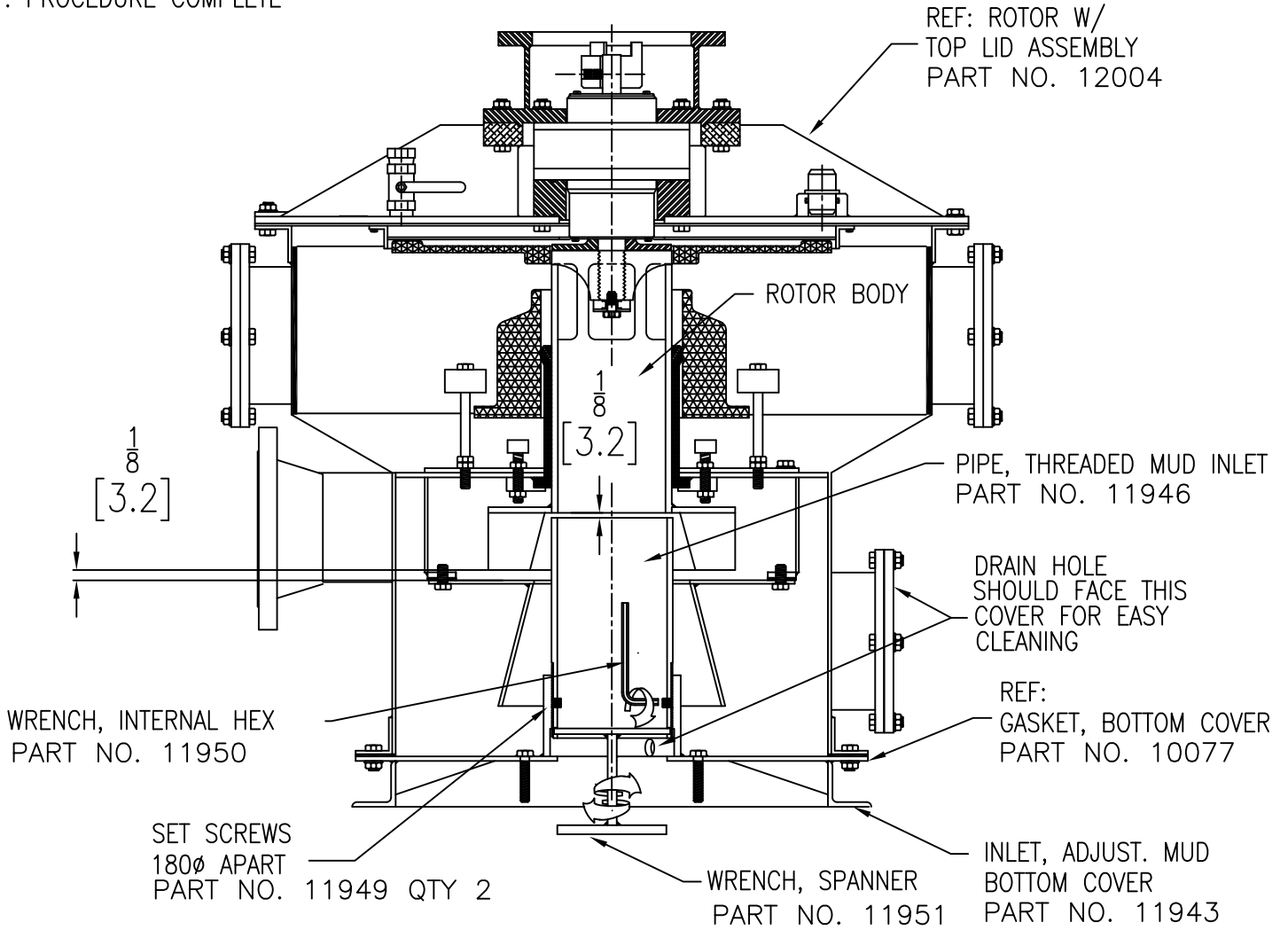
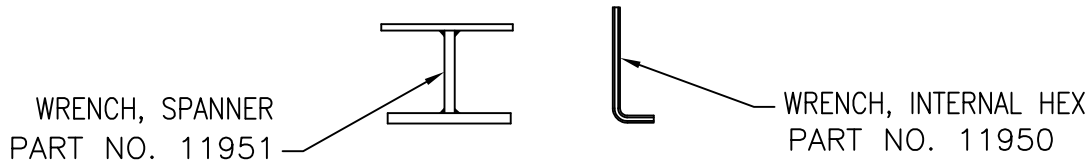


# ASSEMBLY PROCEDURE

1. FASTEN ROTOR WITH TOP LID ASSEMBLY AND GASKET TO THE SHELL
2. FASTEN COVER, PUMP STOP PLATE TO PUMP CASING WITH GASKET
3. FASTEN BOTTOM COVER TO SHELL WITH GASKET
4. USING SPANNER WRENCH PART NO. 11951, TURN INLET PIPE, PART NO. 11946, CLOCKWISE UNTIL IT CONTACTS THE ROTOR BODY.
5. TURN THE INLET PIPE, PART NO. 11946, COUNTER CLOCKWISE ONE COMPLETE TURN TO OBTAIN 1/8 INCH (3,2 MM) GAP BETWEEN ROTORBODY AND INLET PIPE
6. TIGHTEN (2) SET SCREWS, PART NO. 11949 TO SECURE THE INLET PIPE, PART NO. 11946 IN POSITION.
7. PROCEDURE COMPLETE



### TOOLS FOR AJUSTING INLET PIPE



**BURGESS MANUFACTURING, LTD.**

TITLE

INLET KIT, ADJUSTABLE MUD  
INSTALLATION PROCEDURE

THIS DOCUMENT, WHETHER CONTAINING PATENTABLE OR NONPATENTABLE SUBJECT MATTER, EMBODIES THE PROPRIETARY AND CONFIDENTIAL INFORMATION OF BURGESS MANUFACTURING, LTD. IT IS LOANED IN CONFIDENCE WITH THE UNDERSTANDING THAT IT WILL NOT BE REPRODUCED, USED OR DISCLOSED FOR ANY PURPOSE EXCEPT THE LIMITED PURPOSE FOR WHICH IT IS LOANED. THIS DOCUMENT SHALL BE RETURNED TO BURGESS MANUFACTURING, LTD. UPON DEMAND.



DRAWN BY:

HB

DATE:

18 MAY 06

DWG NO.

11940

SCALE:

NONE

APP'D: