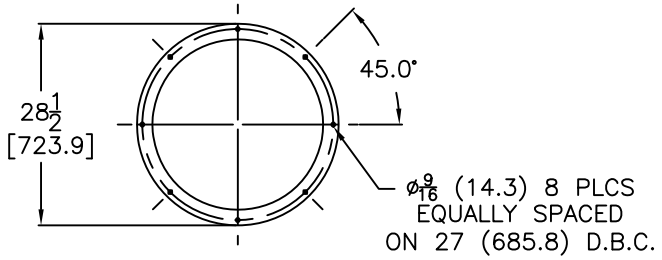
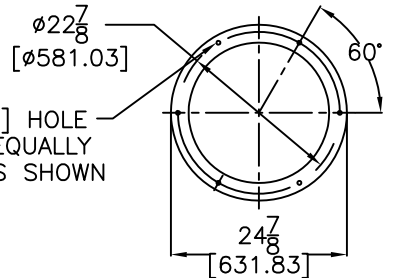


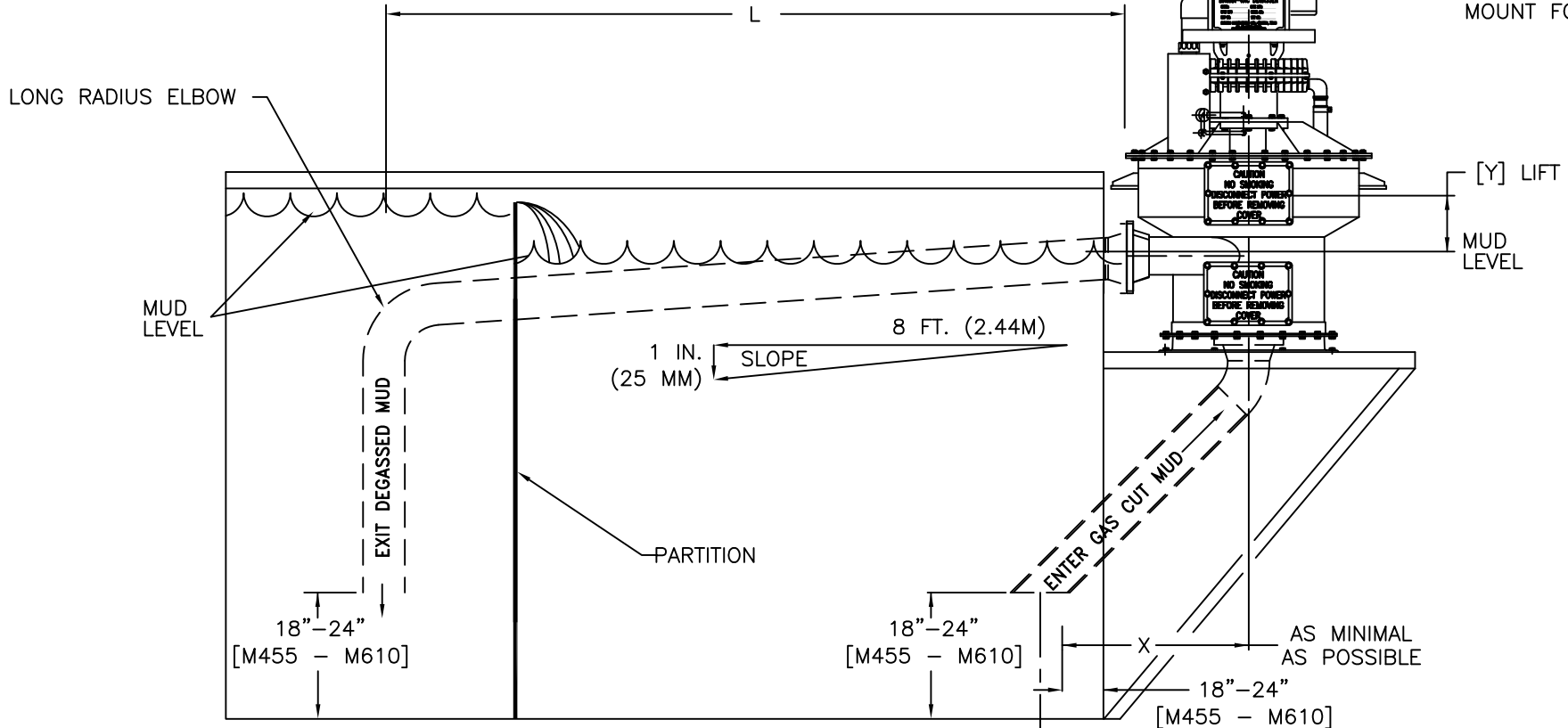
BURGESS MAGNA-VAC DEGASSER®



HOLE PATTERN FOR BOTTOM MOUNT FOR MODEL 1000 AND MODEL 1500



HOLE PATTERN FOR BOTTOM MOUNT FOR MODEL 500



NOTE

1. THE PERFORMANCE OF THE DEGASSER WILL DEPEND UPON THE VARIABLES "X", "Y", "L" AND MUD WEIGHT. PLEASE CONSULT WITH BURGESS ON THE PROPOSED SET-UP
2. L=10'-15' [3 - 4.6 M] ARE JUST GENERAL NUMBERS THAT CAN CHANGE WITH THE OTHER VARIABLES.
3. DEGASSER MAY BE LOWERED UNTIL "Y" APPROCHES 6" [150 MM]
4. CABLING, PIPING, AND STARTERS PROVIDED BY OTHERS

1/4 INCH [6 MM] RD BAR OR 1/4 X 1/2 INCH [6 X 13 MM] FLAT BAR WELDED IN PLACE OVER THE INTAKE END.



REV.	DATE	DESCRIPTION	BY	CHECKED
BURGESS MANUFACTURING, LTD.				
THIS DOCUMENT, WHETHER CONTAINING PATENTABLE OR NONPATENTABLE SUBJECT MATTER, EMBODIES THE PROPRIETARY AND CONFIDENTIAL INFORMATION OF BURGESS MANUFACTURING, LTD. IT IS LOANED IN CONFIDENCE WITH THE UNDERSTANDING THAT IT WILL NOT BE REPRODUCED, USED OR DISCLOSED FOR ANY PURPOSE EXCEPT THE LIMITED PURPOSE FOR WHICH IT IS LOANED. THIS DOCUMENT SHALL BE RETURNED TO BURGESS MANUFACTURING, LTD. UPON DEMAND.				
		INSTALLATION, ALTERNATE ALL MODELS		
DRAWN BY: BM		DATE: 05 JUNE 01		DWG NO.
APP'D:		11395		

