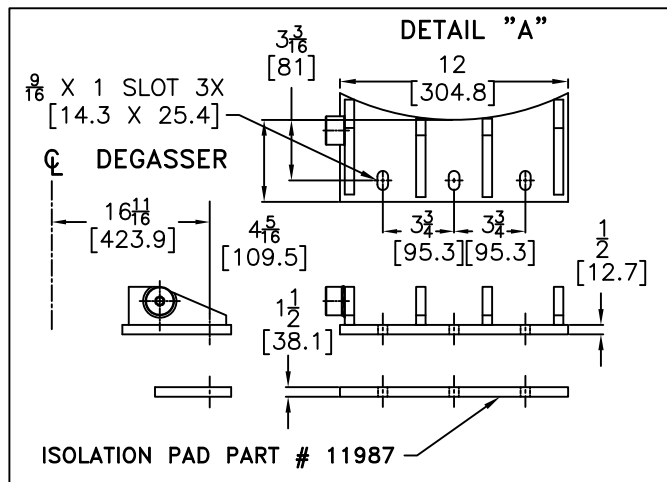


NOTES:

1. DIMENSIONS ACCURATE WITHIN ±1/8 IN. [3 MM] UNLESS OTHERWISE SPECIFIED.
2. PIPE AND SUPPORT SUPPLIED BY OTHERS.
- 3 CLEARANCE OF 18" [457 MM] MINIMUM MUST BE MAINTAINED AROUND BOTH MUD INTAKE LINE AND MUD DISCHARGE LINE TERMINATION
4. FOR PROPER OPERATION AND PERFORMANCE BOTH MUD INTAKE LINE AND MUD DISCHARGE LINE MUST BE SUBMERGED BELOW THE MUD SURFACE
- 5 RECOMMENDED SLOPE OF THE MUD DISCHARGE LINE
= 1 IN. DROP PER 8 FT. RUN
= 10.5 MM DROP PER 1 M. RUN



ESTIMATED DEGASSER WEIGHT
DRY WT. 1217 LBS. [552 KG]
WET WT. 1542 LBS. [700 KG]
ACTUAL WEIGHT MAY VARY

A	13JUN13	ADD VALVES, SWITCH, LUG ECR 1305	GDM	
REV.	DATE	DESCRIPTION	BY	C'KED
BURGESS MANUFACTURING, LTD.				DO NOT SCALE DRAWING
THIS DOCUMENT, WHETHER CONTAINING PATENTABLE OR NONPATENTABLE SUBJECT MATTER, EMBODIES THE PROPRIETARY AND CONFIDENTIAL INFORMATION OF BURGESS MANUFACTURING, LTD. IT IS LOANED IN CONFIDENCE WITH THE UNDERSTANDING THAT IT WILL NOT BE REPRODUCED, USED OR DISCLOSED FOR ANY PURPOSE EXCEPT THE LIMITED PURPOSE FOR WHICH IT IS LOANED. THIS DOCUMENT SHALL BE RETURNED TO BURGESS MANUFACTURING, LTD. UPON DEMAND.				
TITLE INSTALLATION DRAWING PAD/BOTTOM MOUNTED MODEL 500 IEC CE ATEX				
DRAWN BY:	DATE:	APP'D:	DWG. NO.	
GDM	12 JULY 07		11996	